

ASSOCIATE DEGREE, CERTIFICATE & SELECTED TRANSFER PROGRAMS

2022-2023 Programs of Study

Associate Degree
for Transfer
Associate Degree
Certificate

Associate Degree
for Transfer
Associate Degree
Certificate



ART & DESIGN

Program	AA-T	AA	AS	AS-T	✓
ART & DESIGN					
Art		AA			
Art History	AA-T				
Creative Arts		AA			
Digital Illustration					✓
Digital Music					✓
Graphic Design		AS			✓
Liberal Arts: Arts & Humanities		AA			
Studio Arts	AA-T				
Three-Dimensional Arts					✓
Web Design					✓
User Experience & Interface Design					✓
Web Development					✓
BUSINESS & HOSPITALITY					
Accounting		AS			✓
Administrative Specialist		AS			✓
Baking and Pastry		AS			✓
Business		AS			
Business Administration	AS-T				
Business Administration 2.0	AS-T				
Business Information Professional 1					✓
Business Computing					✓
CPA Exam Preparation 1: Auditing & Attestation (AUD)					✓
CPA Exam Preparation 2: Business Environment & Concepts (BEC)					✓
CPA Exam Preparation 3: Financial Accounting & Reporting (FAR)					✓
CPA Exam Preparation 4: Regulation (REG)					✓
Culinary Arts		AS			✓
Economics	AA-T				
Entrepreneurship & Small Business					✓
Food Service & Restaurant Management					✓
Fundamental Food Service Skills					✓
Hospitality Management		AS			
Management and Leadership					✓
Microsoft Office					✓
Office Information Systems		AS			✓
Project Coordinator					✓
Project Management					✓
LANGUAGE & LIBERAL ARTS					
Communication Studies	AA-T				✓
English	AA-T				
Liberal Arts: Communication in English & Critical Thinking		AA			
Spanish	AA-T				
EXPLORATORY & GENERAL STUDIES					
Liberal Arts: Arts & Humanities		AA			
Liberal Arts: Communication in English & Critical Thinking		AA			
Liberal Arts: Natural Science and Mathematics		AA			
Liberal Arts: Social and Behavioral Science		AA			
Transfer Studies CSU GE-B					✓
Transfer Studies IGETC for CSU					✓
Transfer Studies IGETC for UC					✓



BUSINESS & HOSPITALITY



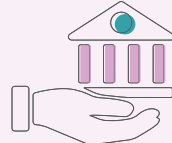
LANGUAGE & LIBERAL ARTS



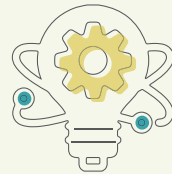
EXPLORATORY & GENERAL STUDIES



HEALTH SCIENCE



PUBLIC SERVICE & SOCIAL SCIENCE



SCIENCE TECHNOLOGY ENGINEERING & MATH

Program	AA-T	AS	AS-T	✓
HEALTH SCIENCE				
Fitness & Health				✓
Human Biology		AS		
Kinesiology	AA-T			
Nursing Assistant				✓
Nutrition and Dietetics	AS-T			
Registered Nursing (LVN to RN)		AS		
Vocational Nursing		AS		✓
PUBLIC SERVICE & SOCIAL SCIENCE				
Administration of Justice		AS-T		
Anthropology	AA-T			
Associate Teacher				✓
Early Childhood Education	AS-T	AS		
Early Intervention Assistant				✓
Economics	AA-T			
Fire Fighter/EMT Academy				✓
Fire Technology		AS		
Fire Prevention Internship Certification				✓
History	AA-T			
Liberal Arts: Social and Behavioral Science		AA		
Master Teacher				✓
Political Science	AA-T			
Psychology	AA-T			
Social Justice Studies	AA-T			
Sociology	AA-T			
SCIENCE TECHNOLOGY ENGINEERING & MATH				
Biology	AS-T			
Biological Science		AS		
Cisco Certified Network Administration (CCNA)				✓
Computer Information Systems		AS		✓
Computer Network Technology		AS		
Data Analyst Associate				✓
Engineering		AS		✓
Human Biology		AS		
IT Helpdesk Technician				✓
Liberal Arts: Natural Science and Mathematics		AA		
Mathematics	AS-T	AS		
Mechatronic Technology		AS		✓
Nutrition and Dietetics	AS-T			
Physics	AS-T			
Web Design				✓
Web Development				✓
APPRENTICESHIP PROGRAMS				
Coach Operator				✓
Overhead line Worker				✓
Public Transit Leadership				✓
Service Mechanic				✓
Track Worker				✓
CREDIT ESL PROGRAMS				
English as a Second Language				X
NON CREDIT PROGRAMS				
Low- Beginning ESL				0
High- Beginning ESL				0
Beginning ESL				0
ESL for Childcare				0
Beginning Computer Skills				0
Basic Writing Skills				0
Community Health Worker				0
English For Careers in Food Service				0
English for Child Development				0
Low Intermediate ESL				0
Preparation for Academic Success in ESL				0
NOT FOR CREDIT PROGRAMS				
Pharmacy Technician				

AA-T = Associate of Art Degree for Transfer | AS-T = Associate of Science Degree for Transfer
 AA = Associate of Art Degree | AS = Associate of Science Degree
 ✓ = For Credit Certificate of Achievement | x = Department issued For Credit Certificate of Proficiency
 0 = Non Credit Certificate of Competency or Certificate of Completion



GETTING STARTED AT MISSION

We look forward to having you join us at Mission College! If you ever need help or get stuck, go to welcome.missioncollege.edu and live chat with our Welcome Center. A student ID will need to be re-activated through CCC Apply if you miss a semester and want to register for classes. If you lose your student ID number go here: web.wvm.edu/whatsmyid/gnumber

START HERE: APPLY.MISSIONCOLLEGE.EDU

1

APPLY FOR ADMISSION

- Apply via CCC Apply. A student will receive a Student ID Number (G01234567) within 24 hours. The CCCID number is not your Mission College ID number.
- F-1 international students cannot apply using CCC Apply. They must submit their information via the International Student Application at iis.missioncollege.edu.
- High School students will need to have a counselor or principal sign off on their courses. See hs.missioncollege.edu for details.
- Explore college resources on MyPath.

2

DECLARE YOUR VACCINATION STATUS

- Students taking in-person classes must declare their vaccination status or provide a medical or religious exemption. The declaration is optional for online classes. The information will be verified by our vendor, Pyramed through a state database and followed up by Health Services with any discrepancies.

Declare status at: [My Mission Portal](#)

3

APPLY FOR FINANCIAL AID

- Apply for Financial Aid by submitting the Free Application for Federal Student Aid (FAFSA) and /or the CA Dream Act Application. FAFSA can take between 2-3 weeks to process. You will need the school code (0144558).

Visit financialaid.missioncollege.edu for information.

4

DETERMINE YOUR PLACEMENT

- Complete the Placement Process for math and English from within your My Mission Portal
- Clear Prerequisites from prior experience or college classes, if applicable, via the assessment website.
- Those taking ESL for credit classes need to complete a separate ESL assessment

For Help: Assessment.missioncollege.edu

5

COMPLETE THE REQUIRED ORIENTATION

- Go to My Mission Portal to complete the self-paced, online orientation.

View orientation tutorial video on getting started at counseling.missioncollege.edu

6

MEET WITH A COUNSELOR TO SELECT CLASSES

- Go to My Mission Portal to complete the self-paced, online orientation.

View orientation tutorial video on getting started at counseling.missioncollege.edu

7

REGISTER AND PAY FOR CLASSES

- Students register for classes via My Mission Portal with a current Student ID Number (G01234567)
- Fees are due at the time of enrollment and must be paid the start of the term.
- Students can also do this with the "Go Mission" app. Details on downloading at go.missioncollege.edu

View more information at: missioncollege.edu/admissions/become-a-student/index.html

8

WVM EMAIL / SINGLE SIGN-ON

- Students will need a WVM email address to access services via Single Sign-On and will receive a WVM email address once they register for classes.
- Please note it can take up to 72 hours after you receive a student ID number (G01234567) for everything to become active.